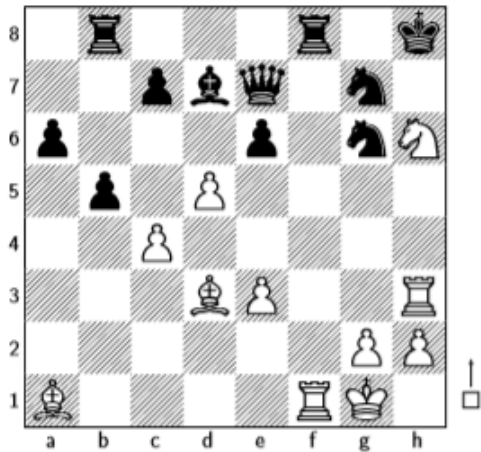
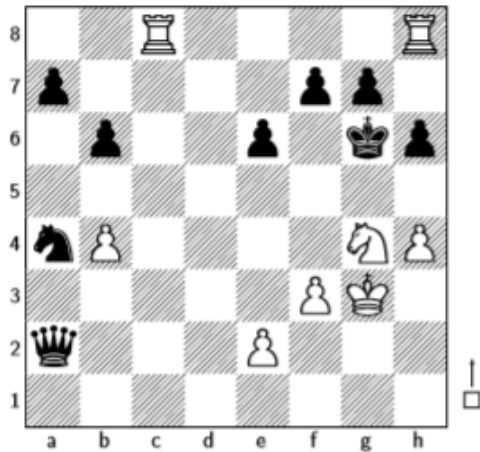


Világos lép mindegyik táblán, ahogy a jelölő négyzetek mutatják. Három lépésben ad mattot. Tehát világos, sötét aztán világos és sötét lép és világos mattot ad! Sötét nem tudja egyik táblán sem megúszni a mattot!

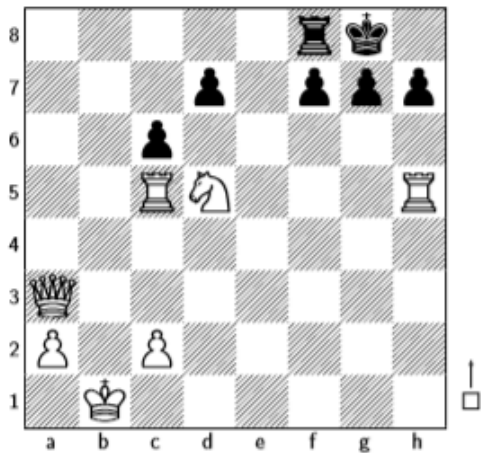
3725



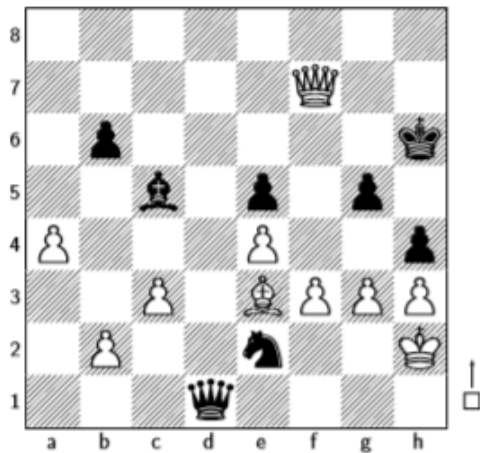
3728



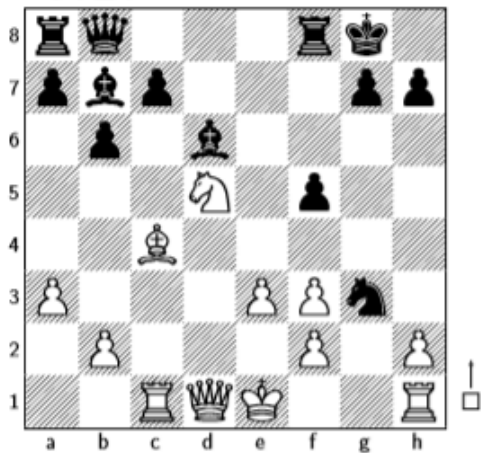
3726



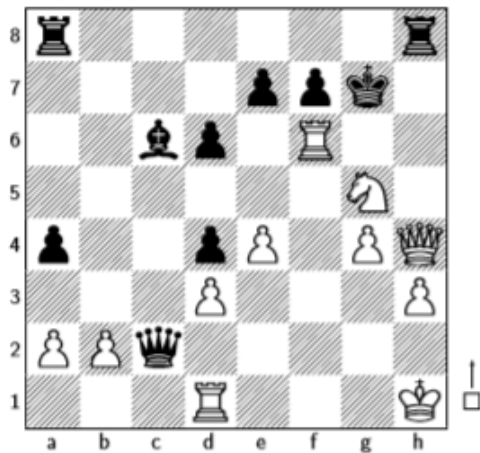
3729



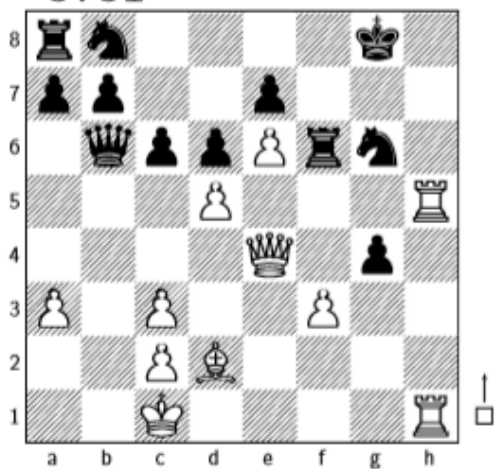
3727



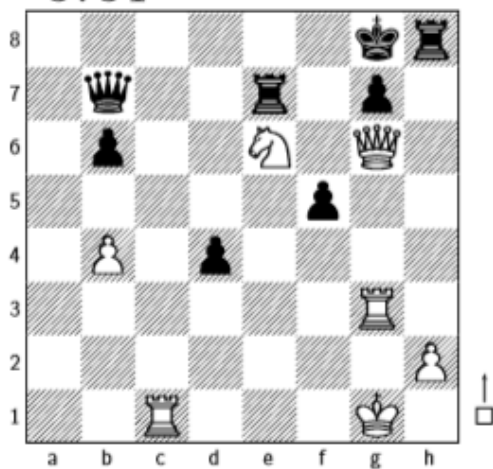
3730



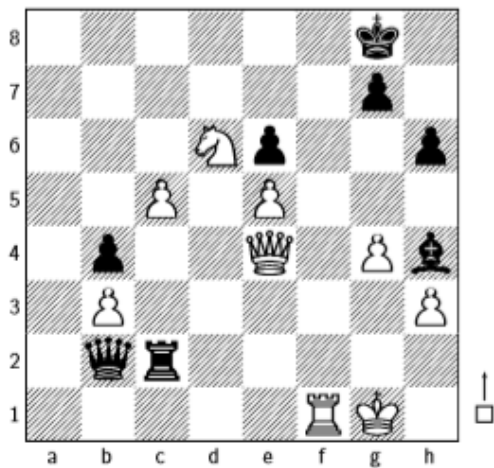
3731



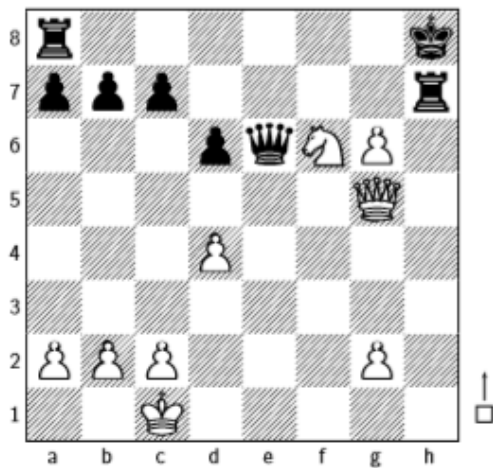
3734



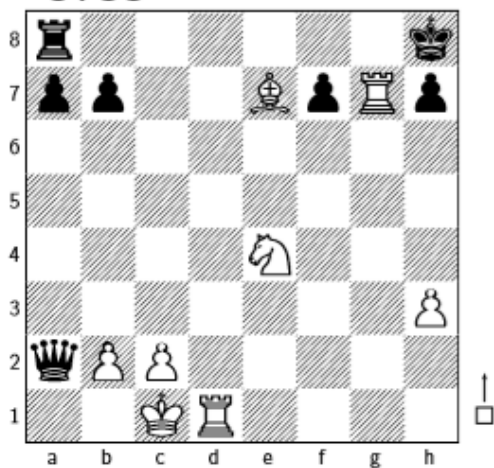
3732



3735



3733



3736

